

2016 RUGBY LAW CHANGES IN NZ

WHAT HAS CHANGED?

Minor amendments to some laws took effect in all levels of rugby in NZ on 1 January 2016. Investec Super Rugby was the first competition to run with these changes.

MAUL

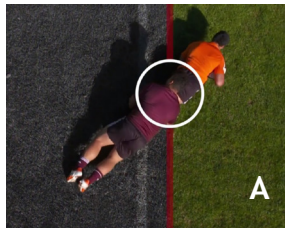
- A player with the ball cannot move to the back of the maul, otherwise a penalty can be given.

SCRUMS

- The ball can be cleared if available, when the scrum collapses.
- If a player is lifted in the air, the scrum is ended immediately.
- A team must be ready to crouch within 30 seconds of the referee setting the mark. Sanction: free kick
- If a scrum wheels, it is reset and the ball is put in by the same team.
- When a team has won the ball, the opposing halfback may not step in the space between the flanker and number 8.

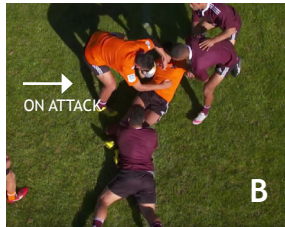
WHAT CHANGES ARE BEING TRIALLED?

LAW 15: THE TACKLE



1. The tackler must release the ball carrier then re-join the tackle behind the midpoint (see diagram A) to play the ball.
2. The first arriving defender may play the ball as long as they are on their feet, and prior to the breakdown being formed.
3. Players off their feet are out of the game!!!!

LAW 16: THE BREAKDOWN (PREVIOUSLY RUCK)



1. A breakdown is formed when an attacking player is over the ball on their feet (Diag B).
2. At this point an offside line is in place.
3. The breakdown offside line for defenders is the hindmost foot (Diag C).
4. Players joining the breakdown must do so from behind the offside line and join behind the midpoint of the breakdown. (Diag D).
5. Players joining the breakdown must bind onto any player, using their whole arm.
6. Players must be on their feet for the duration of the breakdown.
7. A player may be in the halfback position and remain behind the hindmost foot offside line (Diag C).
8. A player in the halfback position may lift the ball from the breakdown.
9. Once the ball emerges from the breakdown it has ended.

POINTS VALUE

A different points scoring system will be used: Try = 6 points | Penalty Try = 8 points (no conversion attempt required) | Conversion = 2 points | Penalty goal = 2 points | Dropped goal = 2 points

WHEN ARE THE CHANGES BEING TRIALLED?

As at March 2016, New Zealand Rugby and the Provincial Unions have decided to trial two of the changes proposed by World Rugby to the Laws of the Game.

The changes we are trialling in New Zealand aren't all the changes that World Rugby has proposed. You can find out more about the full list of changes at www.worldrugby.org/news/129899

LAW TRIAL	WILL BE TRIALLED IN
BREAKDOWN LAWS	Mitre 10 Cup
Law 15 - Tackle and Law 16 - Breakdown	Premier Club Competitions in: Bay of Plenty; North Harbour; Northland; Otago; Southland; Taranaki; Tasman and Waikato
POINTS VALUE	Mitre 10 Heartland Championship

WHAT HAPPENS AFTER THE TRIALS?

1. A robust review process
2. Decision whether to run a global trial in 2017
3. Possible adoption in May 2018

WHY ARE THERE RUGBY LAW CHANGES?

Every four years, World Rugby undertakes a complete health-check of the game, looking at playing trends across the men's fifteens Rugby World Cup cycle to ensure that rugby continues to develop around the world.

The priorities for this round of changes are making rugby:

- Safer to play;
- Easier to understand; and
- More entertaining to watch.

Before permanent changes are made to the *Laws of the Game*, proposed changes are trialled to ensure that they deliver the outcomes we all want for our sport.



HOW DO I FIND OUT MORE?

NEW ZEALAND RUGBY

E: 2016lawtrials@nznzrugby.co.nz

Postal Address

PO Box 2172, Wellington 6140

Online

<http://bit.ly/LawTrialsFAQ>

